

D PC Program

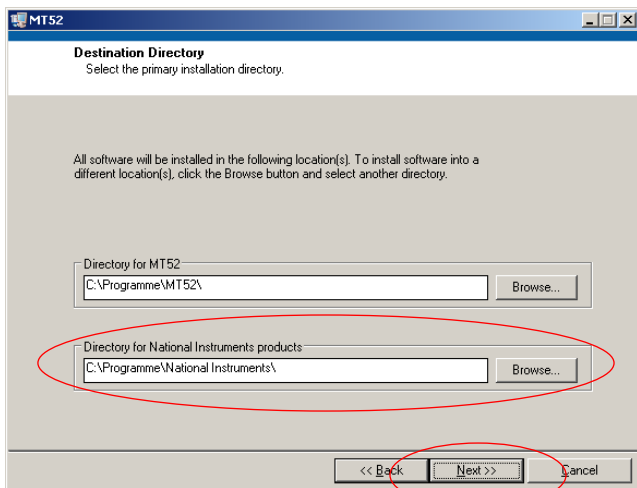
D.1 PC Software Installation

D.1.1 System Requirements

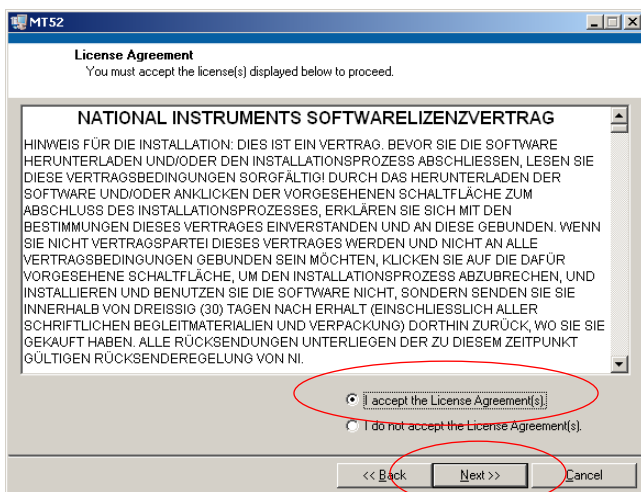
	Minimum System Requirements	Recommended
Processor	Pentium III 866 MHz	Pentium 4/M or higher
RAM	256 MB	1 GB
Display	1280 x 1024	1280 x 1024
Operating System	Windows XP	Windows XP

D.1.2 Installation

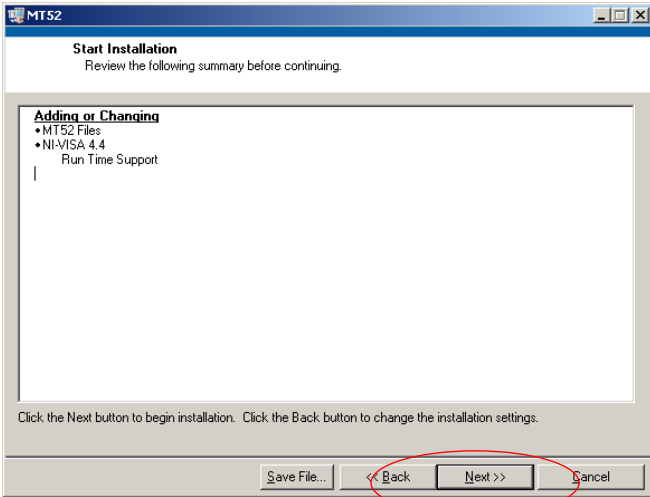
1. Download the latest version of the software from the Bepro site (http://www.bepro.ch/messtechnik_download.html).
2. Unpack the zip file and run the program „setup.exe“. You will now be guided through the installation program.



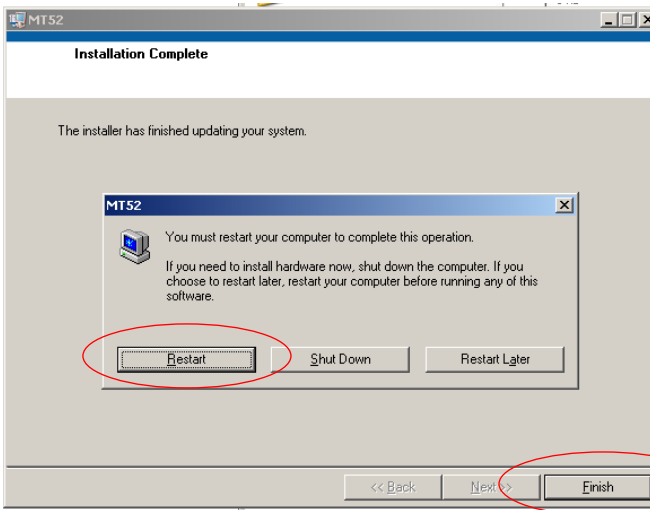
3. Enter the installation path. The directory for National Instruments Products (C:\Programme\National Instruments) should be kept.
4. Press the „Next >>“ button.



5. In the two windows that will now appear in succession, chose „I accept the License Agreement(s)“ and press the „Next >>“ button.

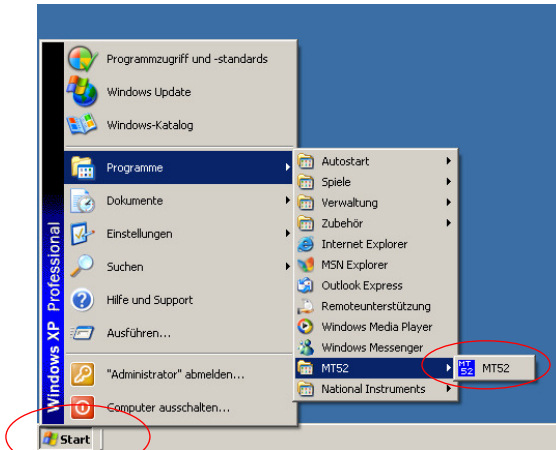


6. Confirm the installation's start by pressing the „Next >>“ button. The MT52 Software and the driver for the serial interface are now being installed.

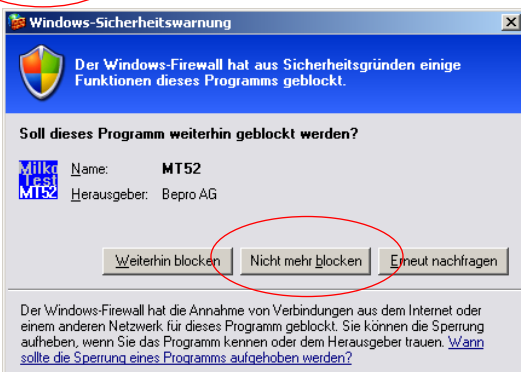


7. After the installation is complete, you will be asked to restart the system.

D.1.3 First run of the MT52 PC Software



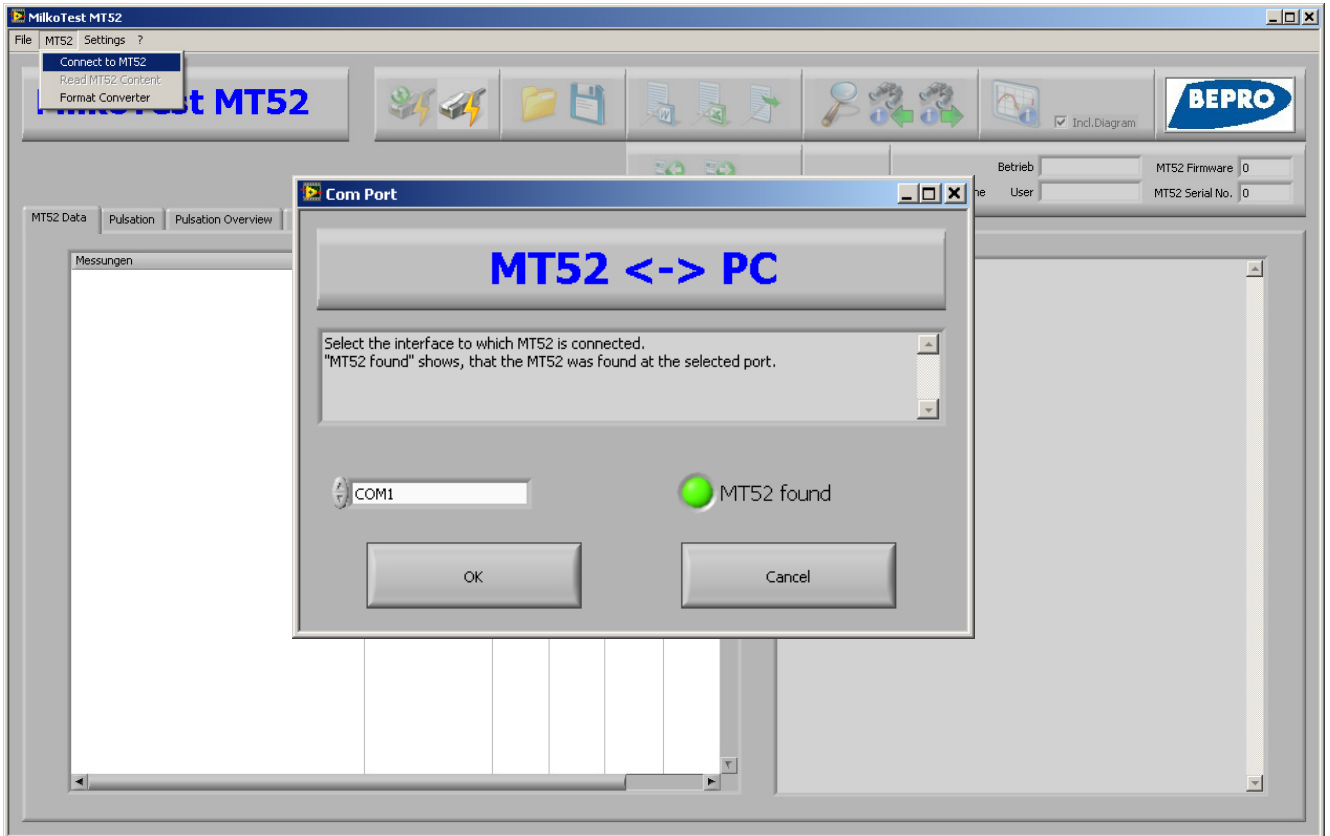
1. After the system restart, run the program. You will find it at Start -> Programs -> MT52



2. A Windows Security Alert window will now appear. Press "Unblock" to stop this warning appearing.

D.1.4 Entering the licence code

1. Connect the MT52 with your computer by the use of the cable delivered with your MT52 package. Switch on the MT52.
2. In the menu „MT52 -> Connect to MT52“, chose the port to which the MT52 is connected. When the device is recognized correctly, the green light next to „MT52 found“ flashes on.



3. To enable the PC program, chose the menu „Settings -> Options“. Enter the licence keys at the correspondent option. The individual modules will now be enabled. To finish this operation and save the keys, chose the menu „File -> Exit“. Note: As long as the licence key is not entered correctly (the green light next to "online" stays dark), the program only runs in demo mode. In this mode, you cannot save any measurements.

If you want to connect more than one MT52 device to one single computer, you need to repeat these steps for each device. Connect only one device to the computer at a time.

4. The MT52 PC program can now be used.

